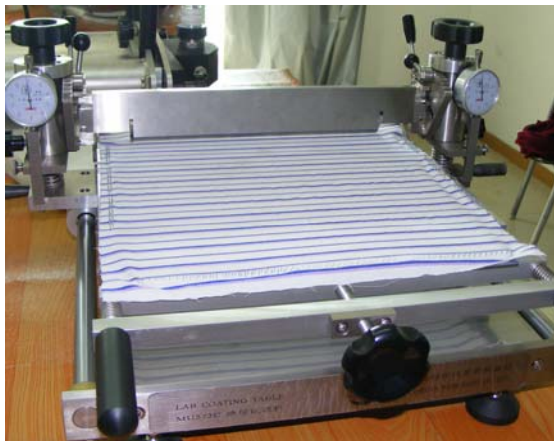




WWW.FYICHINA.COM.CN

FANYUAN INSTRUMENT (HF) CO., LTD.
DOWELL SCIENCE AND TECHNOLOGY (HK) CO., LTD.
ADD: Tianyuan Road 9#, High-tech Zone, Hefei City, China Postal Code: 230088
TEL: +86-551-65232508
FAX: +86-551-65232507
Email: sales@hkdownell.com
Website: <http://www.fyichina.com.cn>

MU572C LAB COATING TABLE



Coating



Drying



WWW.FYICHINA.COM.CN

FANYUAN INSTRUMENT (HF) CO., LTD.
DOWELL SCIENCE AND TECHNOLOGY (HK) CO., LTD.
ADD: Tianyuan Road 9#, High-tech Zone, Hefei City, China Postal Code: 230088
TEL: +86-551-65232508
FAX: +86-551-65232507
Email: sales@hkdowell.com
Website: <http://www.fyichina.com.cn>

History:

Oct. 1986 Our textile equipment institute was established.

Apr. 2000 Shanghai branch office of BASF (CHINA) CO. LTD placed an order for coating machine to us. Their requirement was that the quality of our products can come up to Mathis' and our product can be compatible with Mathis LTE-S labcoater.

Oct. 2000 Our first coating machine JMU972 was designed.

Jun. 2002 Visit to Europe for communication

Jan. 2004 MU572C lab coating table was designed.

May 2006 MU574 full-automatic coating machine was designed.

Aug. 2009 GM300 was designed which is used to coat casting solution on flat fabric.



Office Building (1986)



Meeting Room (1997)



FYI Team (2012)



WWW.FYICHINA.COM.CN

FANYUAN INSTRUMENT (HF) CO., LTD.
DOWELL SCIENCE AND TECHNOLOGY (HK) CO., LTD.
ADD: Tianyuan Road 9#, High-tech Zone, Hefei City, China Postal Code: 230088
TEL: +86-551-65232508
FAX: +86-551-65232507
Email: sales@hkdowell.com
Website: <http://www.fyichina.com.cn>

MODEL NO.

MU572C

Application:

Lab Coating Table Model MU572C is a coating machine for lab use, operated by hand with the coating area of 285mm×300 mm, which is used in lab coating technique experiment. It is suitable for laboratorial proofing test including all sorts of natural fiber, synthetic fiber, blended fabric, nonwoven fabric, specialty paper and artificial leather.

Related Standards:

STANDARDS

Note: this tester can conform to but not limit to all the standards above, for more standards conformance, please contact us.

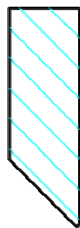
Features:

(1) Better Cost-effective and Quality Design

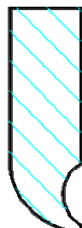
- High grade stainless steel construction, foundation made of cast iron
- Import linear sliding track from Germany
- Equipped ingenious fixture along with blade to block pigment to flow out
- Gradient of blade can be adjustable from 20° up to 115°

(2) More choice

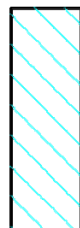
- Four kinds of blades: triangle blade, olecranon blade, square blade and round blade



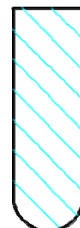
Triangle Blade



Olecranon Blade

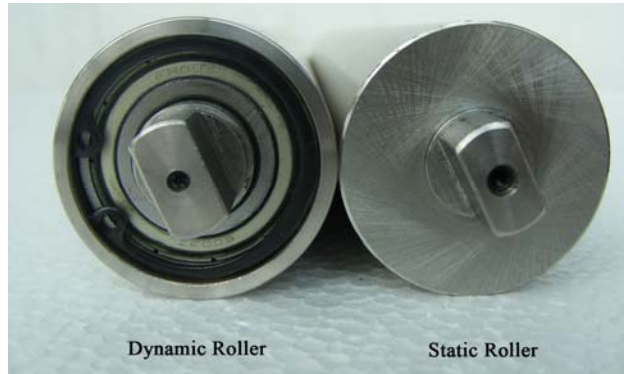


Square Blade

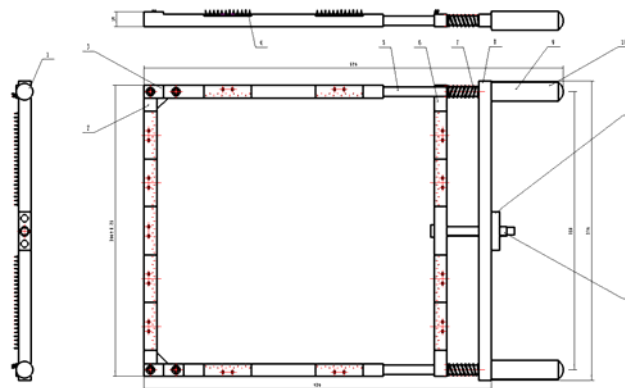


Round Blade

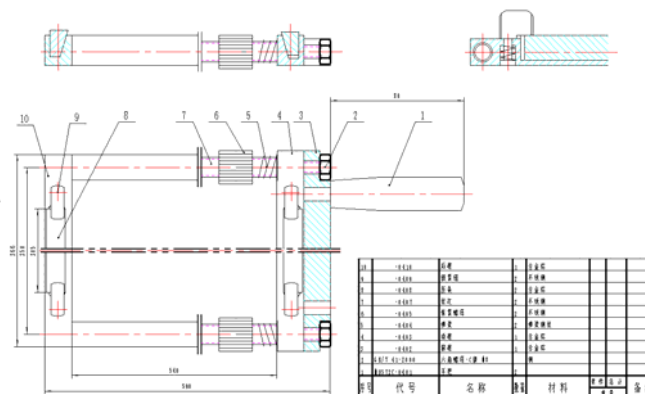
- Two roller types: dynamic roller and static roller



- Three tension frame types: pin frame (for fabric), trim strip frame (for paper) and roller frame (universal), which can achieve “Auxiliary fixed from the transverse, automatic alignment from the lognitudinal” .



Pin frame

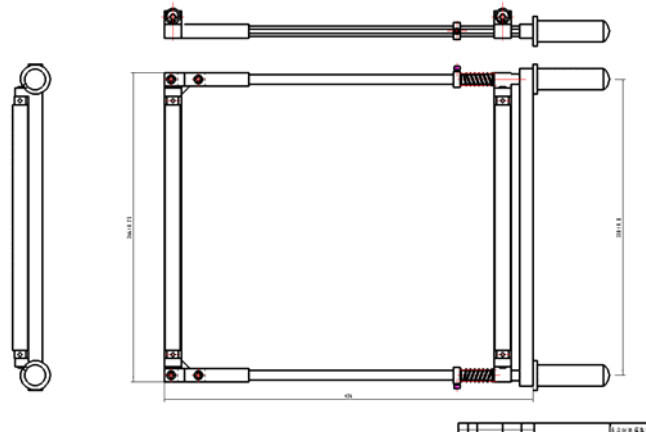


Trim strip frame



WWW.FYICHINA.COM.CN

FANYUAN INSTRUMENT (HF) CO., LTD.
DOWELL SCIENCE AND TECHNOLOGY (HK) CO., LTD.
ADD: Tianyuan Road 9#, High-tech Zone, Hefei City, China Postal Code: 230088
TEL: +86-551-65232508
FAX: +86-551-65232507
Email: sales@hkdowell.com
Website: <http://www.fyichina.com.cn>



Roller frame

- Two coating methods: put static roller into the middle groove or put the both rollers into the first and third groove to meet different needs



Web-based coating



Roll-to-roll coating

- Two tension modes: thread tension (small adjustable range) and sliding sleeve tension (wide adjustable range)

(3) More Humanization Design

- Separate frame handle and screw handle prevent from scalding
- Easier to install coating blade and easier to adjust front angle than other company's products
- Tension frame with aluminum alloy manufacture to be more light and heat resisting



WWW.FYICHINA.COM.CN

FANYUAN INSTRUMENT (HF) CO., LTD.
DOWELL SCIENCE AND TECHNOLOGY (HK) CO., LTD.
ADD: Tianyuan Road 9#, High-tech Zone, Hefei City, China Postal Code: 230088
TEL: +86-551-65232508
FAX: +86-551-65232507
Email: sales@hkdownell.com
Website: <http://www.fyichina.com.cn>

(4) Optional Supporting Equipment

- Compatible with Mathis LTE-S labcoater
- Compatible with our LD-3642 Minidryer or HLD-3642 Sample Steaming Machine



Sample Size: 380×480mm
Coated Surface: 330×380mm
Temperature Range: 20~250℃
Dwell Time: 1~999min
Instrument Size: 800×750×1300mm
Instrument Weight: 130kg
Power Supply: Ac380V, 50Hz, 18.5KW

HLD-3642 Sample Steaming Machine

- 1) Three functions: high temperature gas steamed, setting and drying
- 2) Imported mirror stainless steel with high quality
- 3) Equipped with steam generator
- 4) Temperature and water level can be controlled automatically



WWW.FYICHINA.COM.CN

FANYUAN INSTRUMENT (HF) CO., LTD.
DOWELL SCIENCE AND TECHNOLOGY (HK) CO., LTD.
ADD: Tianyuan Road 9#, High-tech Zone, Hefei City, China Postal Code: 230088
TEL: +86-551-65232508
FAX: +86-551-65232507
Email: sales@hkdownell.com
Website: <http://www.fyichina.com.cn>

Key Specification:

● Tension Frame	365mm×440mm
● Coating Area	285mm×300 mm
● Coating Thickness	0~5mm
● Accuracy of Coating Thickness	0.01mm
● Coating Front Angle	20°~115°
● Blade Type	45°blade
● Blade Spec.	300mm×60mm
● Roller	Φ40mm×300mm
● Instrument Dimension	440mm(L)×680mm(W)×250mm(H)
● Weight	30kg

Standard Configuration:

No.	Item	Quantity
1	Main Machine	1 set
2	45°Blade	1 set
3	Dialgage	2 sets
4	Spanner	2 sets
5	Tension Frame	1 set

Optional Accessories:

No.	Item	Quantity
1	Oecranon Blade	1 set
2	Round Blade	1 set
3	Square Blade	1 set
4	Table Tool Frame	1 set
5	Grounded Bed	1 set

